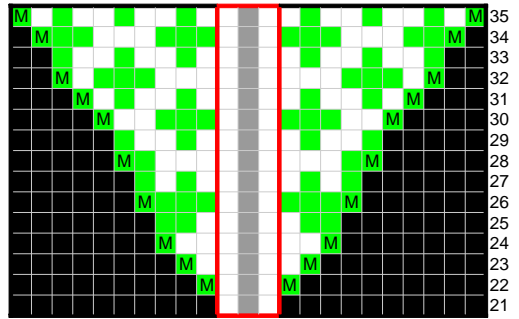
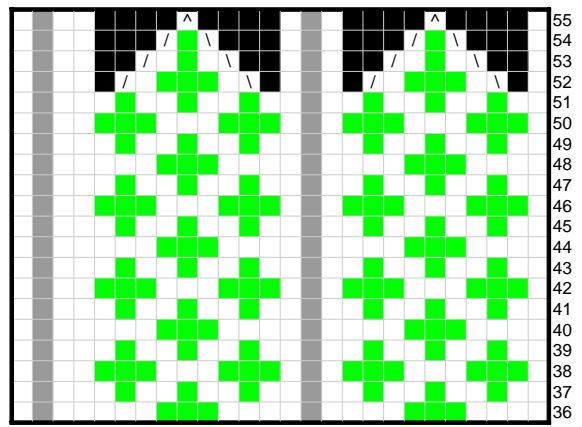
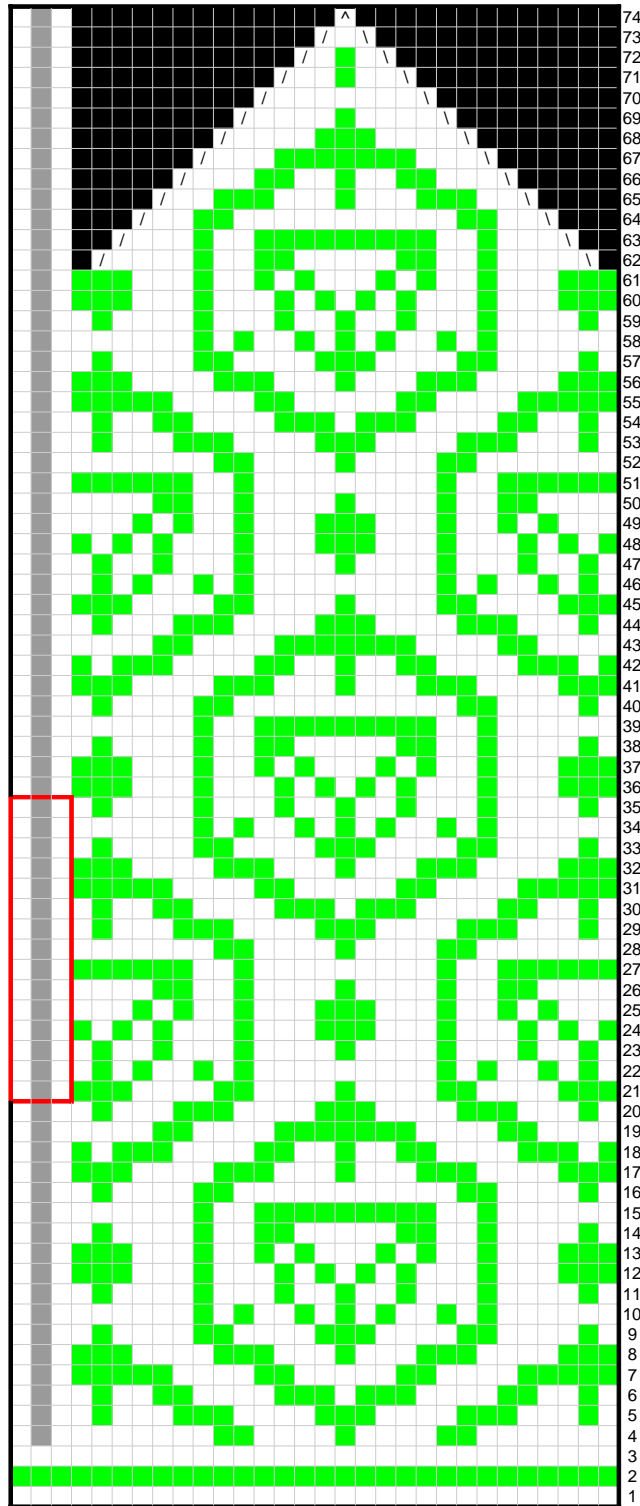
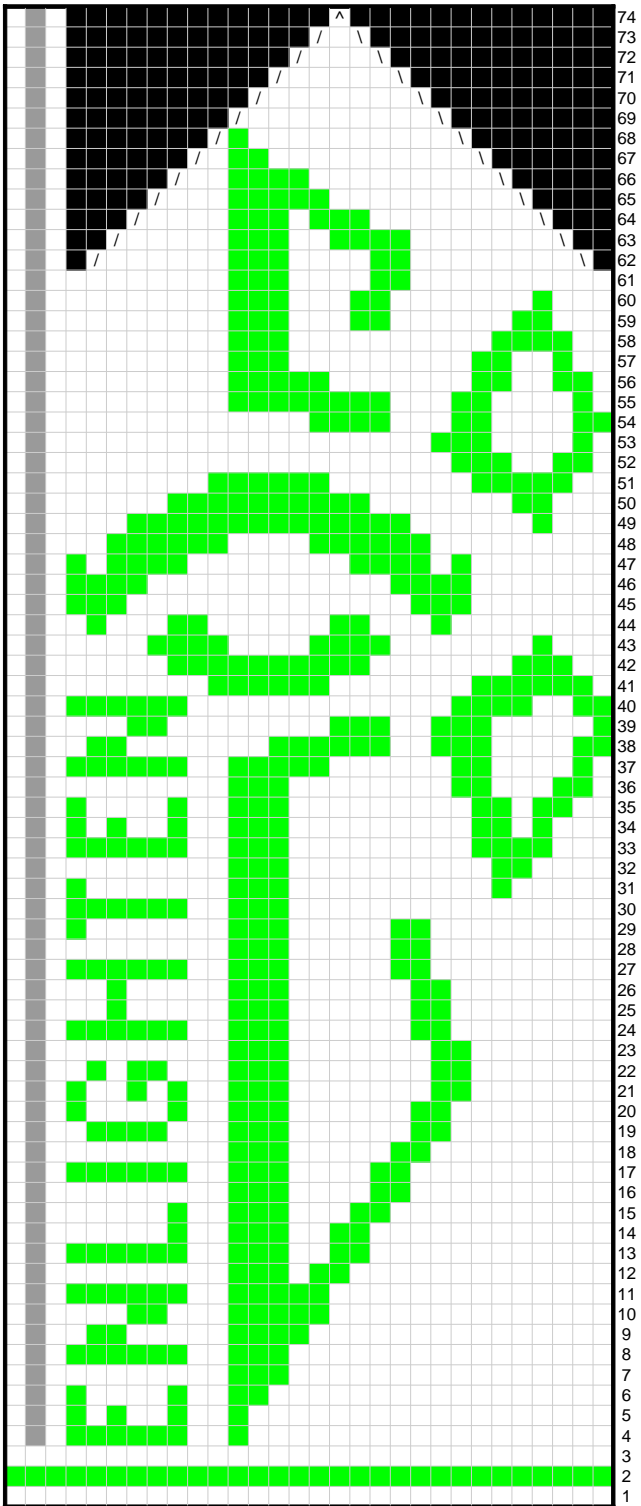


Right Mitten Chart

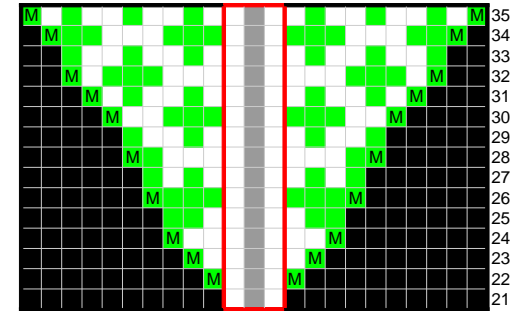
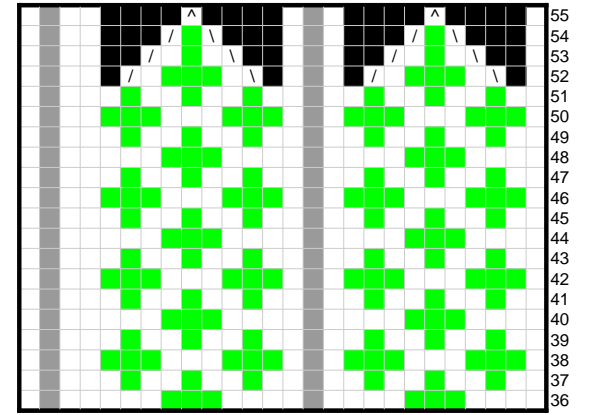


- Key:**  
 / Knit 2 Together  
 \ Slip Slip Knit  
 ^ Slip 2 purl-wise, knit one, pass slipped stitches over  
 M Make 1

Red outline indicates thumb placement



Left Mitten Chart



**Key:**

- / Knit 2 Together
- \ Slip Slip Knit
- ^ Slip 2 purl-wise, knit one, pass slipped stitches over
- M Make 1

Red outline indicates thumb placement