

Ingress Mittens

Designed by Melissa Jaarsma (Codename: alysanía, Faction: Resistance)
<http://www.sheetar.com> | [twitter](#) | [Google+](#) | [ravelry](#) | alysania@gmail.com

When I started playing Ingress in January 2013, I had planned to knit a pair of mittens for Ingress, maybe with the Ingress logo somewhere in the design. Over the summer, the idea grew and finally, this fall, as the weather turned cooler again, came to life. The resulting pattern here is a basic guideline and expects an intermediate skill level knitting with two colors in the round. Conductive thread can be added to key spots on the mittens to enable the wearer to play in the cold. Keep Warm and Hack On!



Yarn: Valley Yarns Northampton Sport (164 yards per 50g) – One skein each in colors, “Light Grey,” for main color (MC) and “Ocean Heather” for contrast color (CC). (Optional, 4 yards Habu a-148 Wool Stainless Steel yarn for conductivity patches)

Needles: Double Pointed Needles, size US 3 (3.25mm)

Notions: Tapestry needle, stitch holder (or waste yarn), scissors, stitch marker

Gauge: 7 stitches across by 9 stitches high = one inch

Finished size: 9 inches in length, 4.25 inches in width

Fits an average woman's hand size, length, 7 inches, palm circumference (without thumb), 8 inches

Size can be modified by using larger needles.

Method

Right Mitten

Cast on 60 stitches in MC, divide over 4 DPNs. Join to work in the round, being careful not to twist. Knit one round (row 1 of right mitten chart).

Knit one row in CC (row 2 of chart).

Continue working chart as established.

Row 21: After the third stitch, place stitch marker to designate thumb stitches. Continue knitting, including thumb increases according to thumb chart.

Row 36: Transfer 23 thumb stitches to stitch holder. Cast on three stitches in pattern (MC, CC, MC). Continue working chart.

After completing round 74, bind off remaining eight stitches using kitchener stitch.

Thumb

Pick up thumb stitches from holder. Join yarn to knit in the round, picking up three stitches in pattern (MC, CC, MC). Work as per chart, decreasing as directed.

After completing row 55, bind off remaining ten stitches using kitchener stitch.

Left Mitten

Repeat as above for left mitten, following left mitten chart.

Finishing

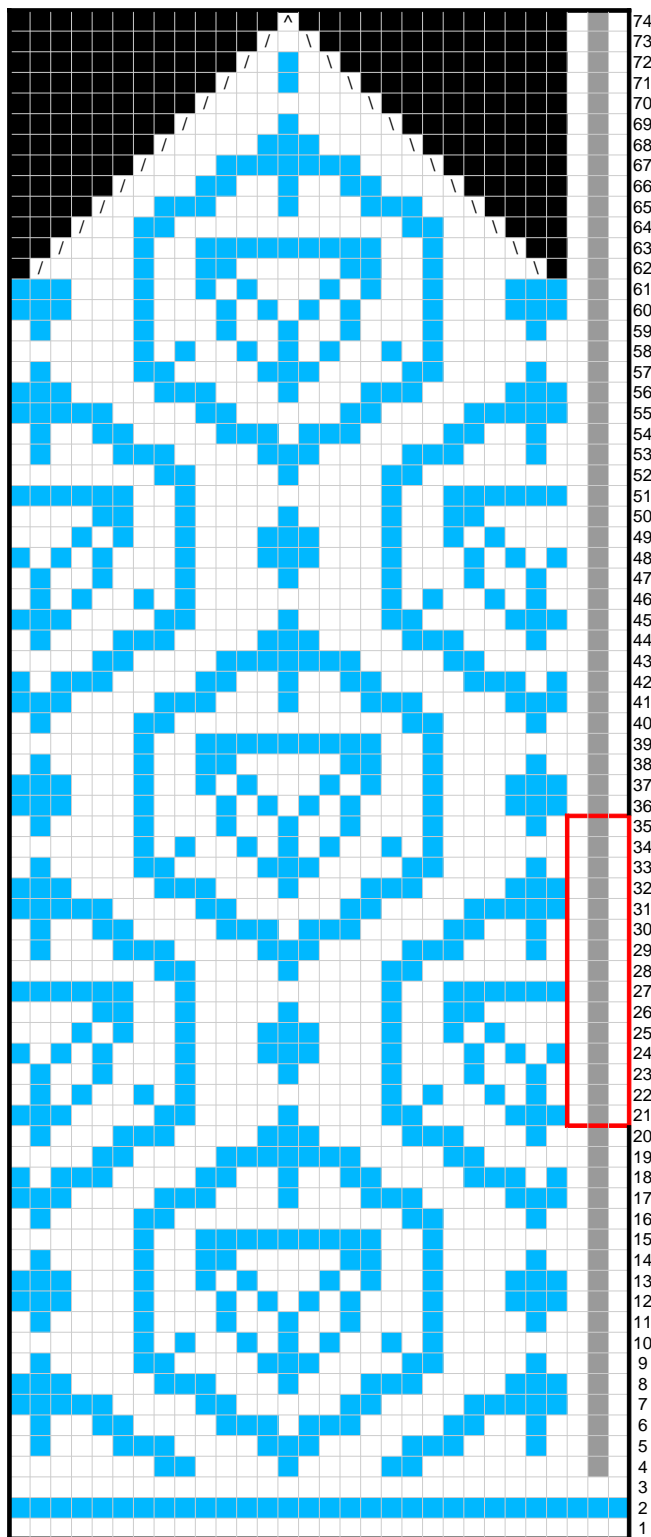
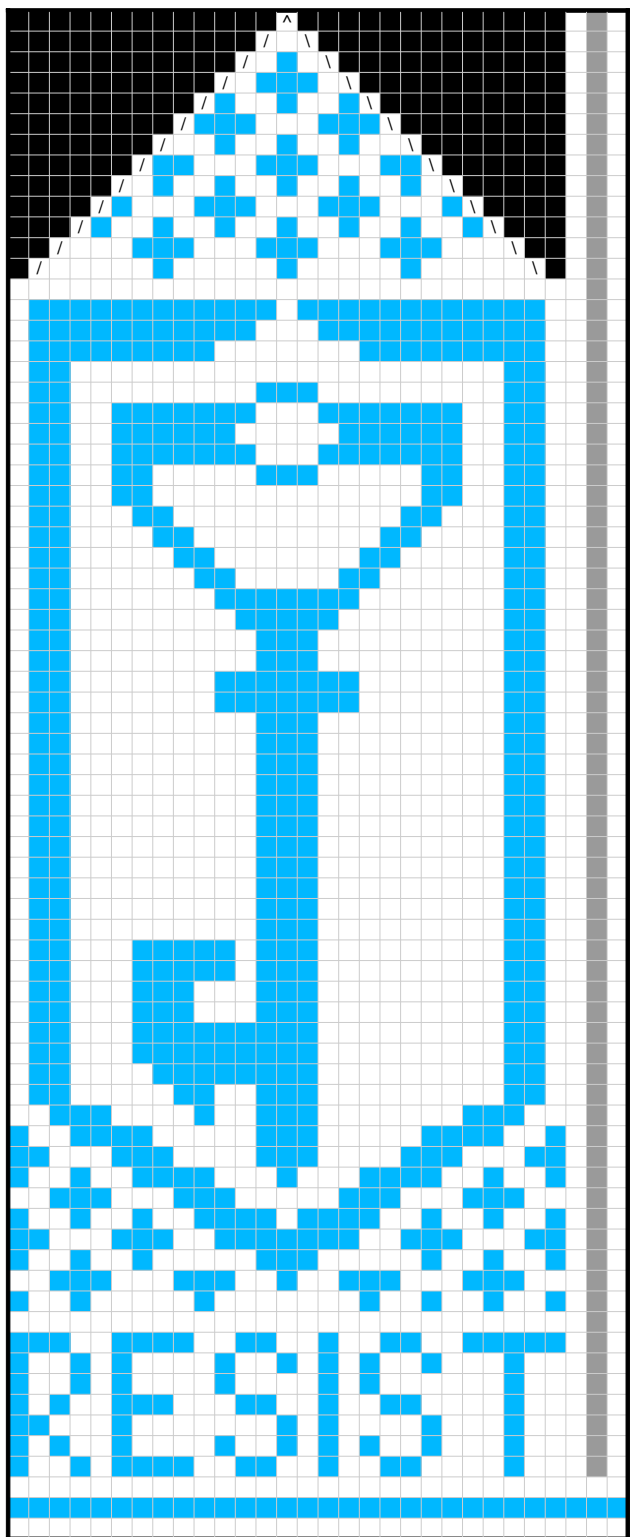
Weave in ends. Wash, block, and enjoy!

Optional: Add applied i-cord in blue to open ends of the mittens for a finished look.

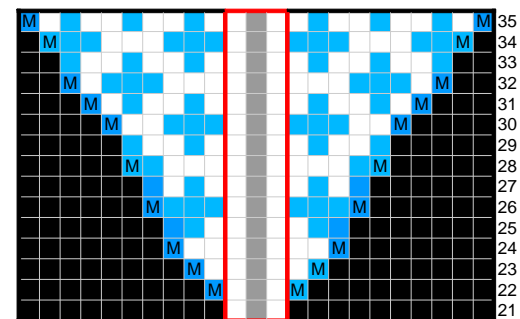
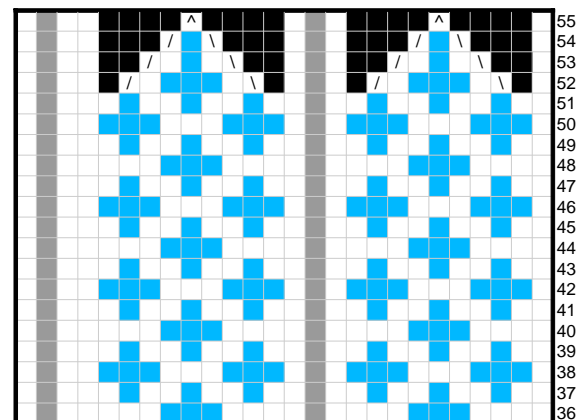
Optional: Stitch in conductive thread (used here: Habu wool stainless steel) as needed.



Please feel free to contact the designer with any errors, questions or comments. The Ingress and Resistance key logos are used as part of this user-generated artwork and the pattern is offered for free. Please feel free to use this pattern for personal use, but sale of the pattern or finished object is strictly prohibited by Ingress guidelines.

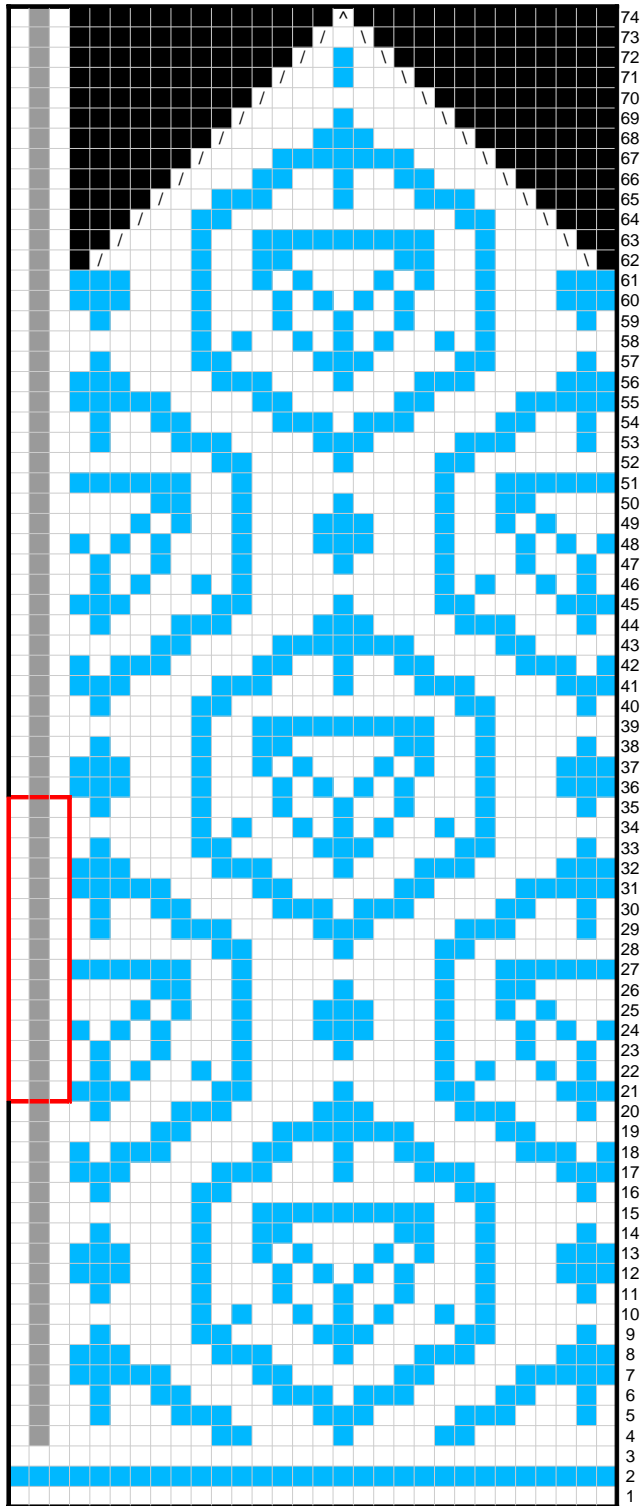
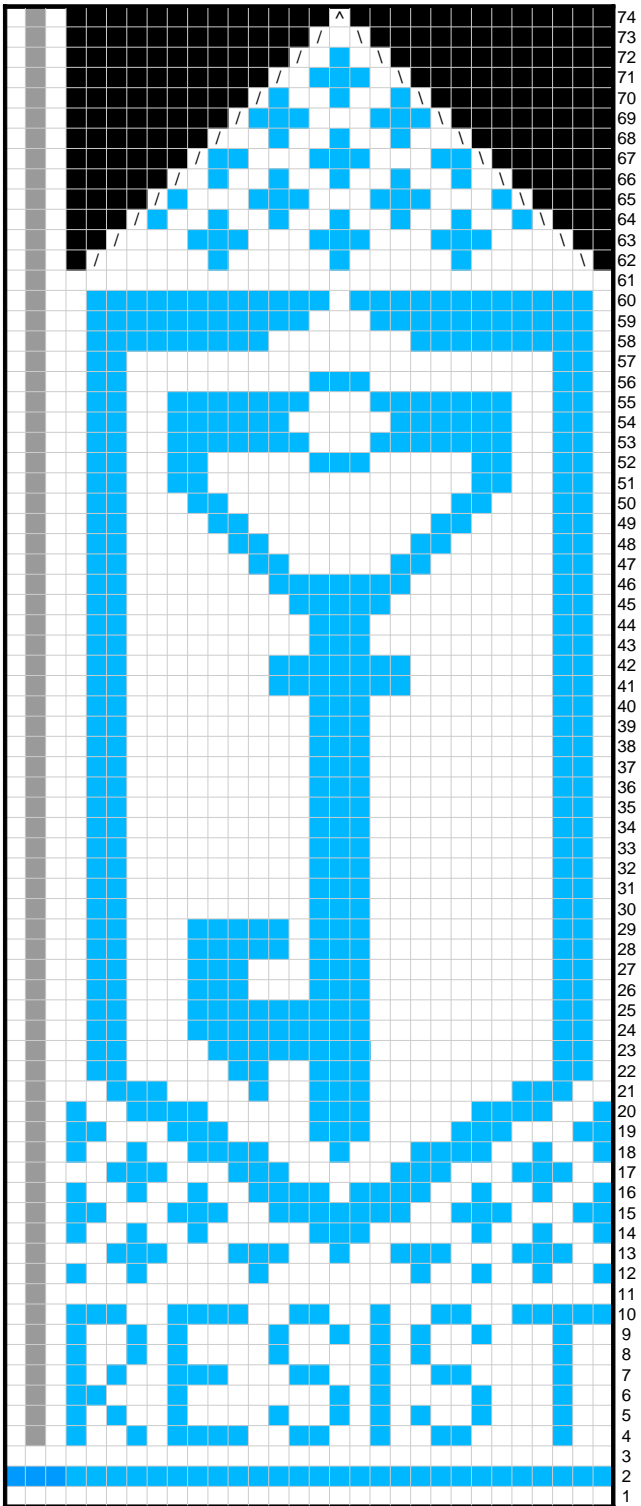


Right Mitten Chart

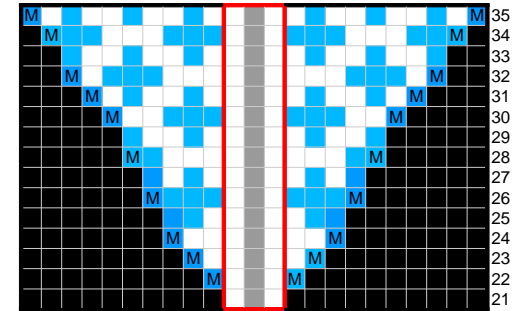
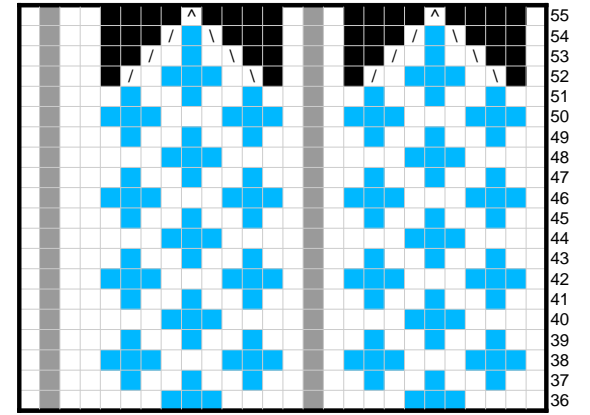


- Key:**
 / Knit 2 Together
 \ Slip Slip Knit
 ^ Slip 2 purl-wise, knit one, pass slipped stitches over
 M Make 1

Red outline indicates thumb placement



Left Mitten Chart



Key:

- / Knit 2 Together
- \ Slip Slip Knit
- ^ Slip 2 purl-wise, knit one, pass slipped stitches over
- M Make 1

Red outline indicates thumb placement