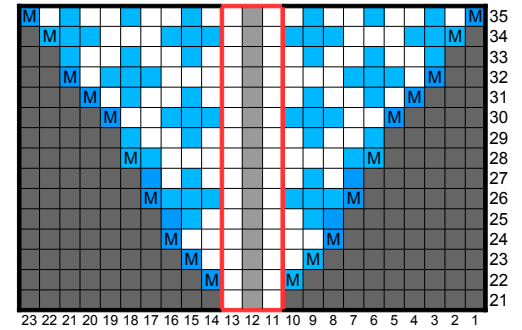
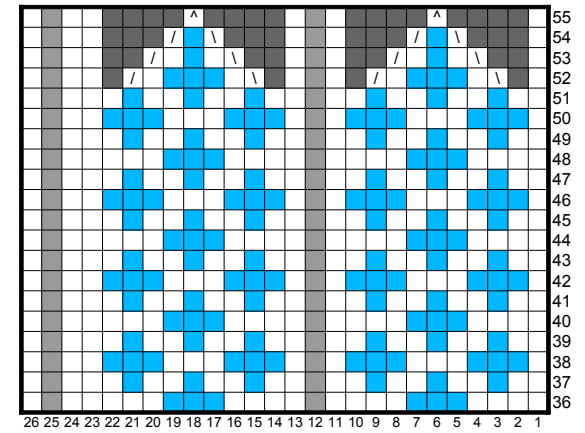


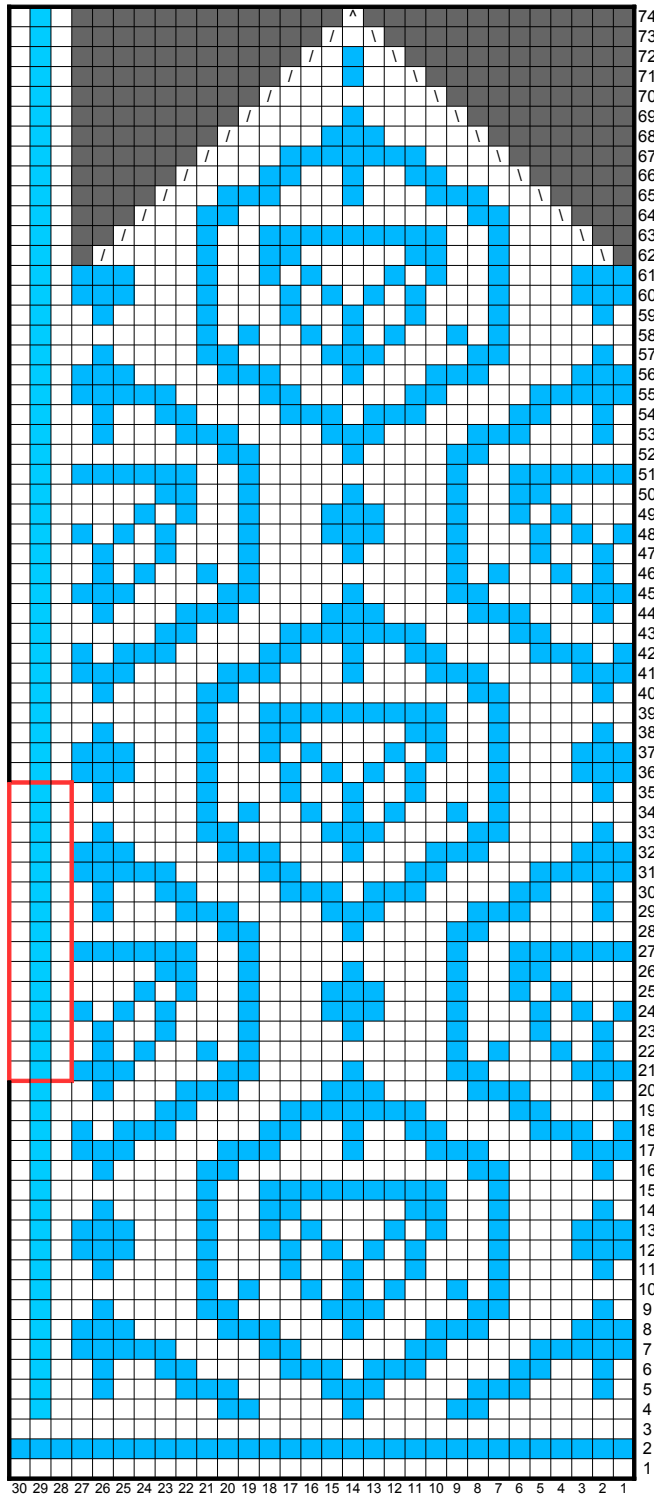
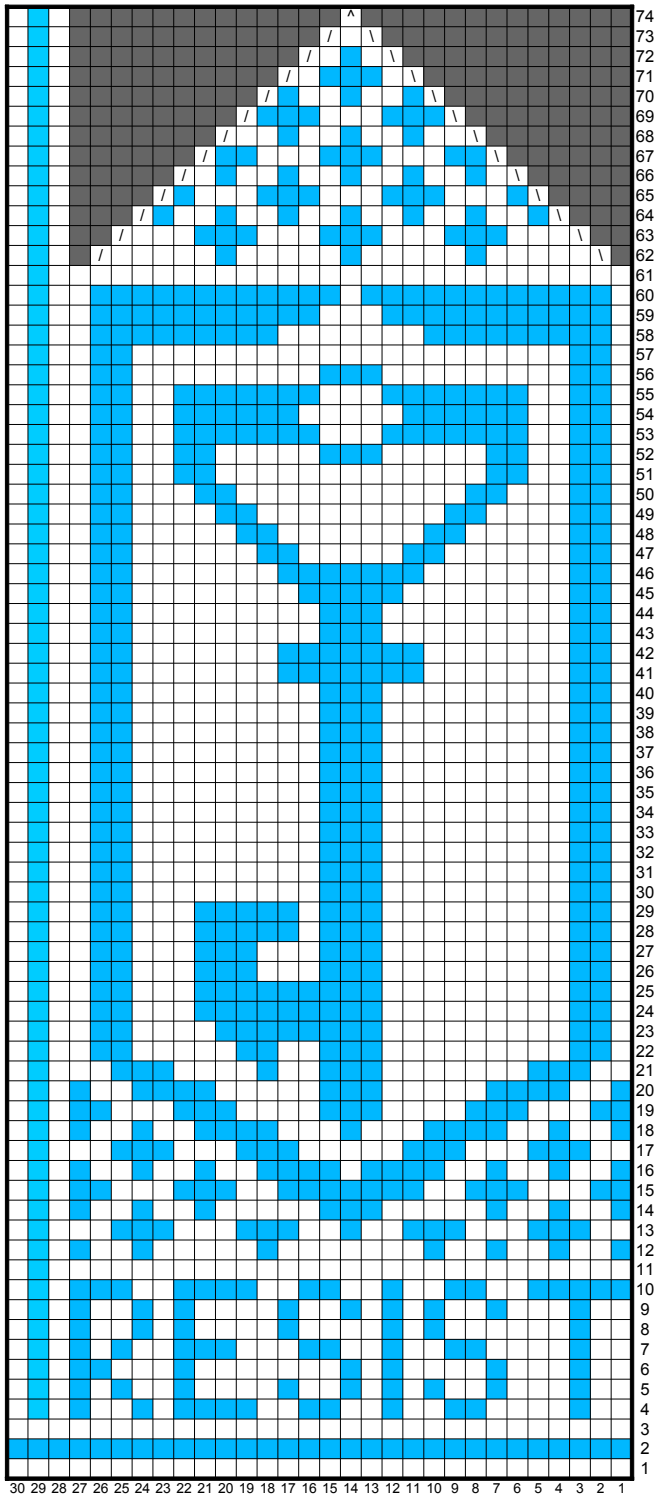
Right Mitten Chart



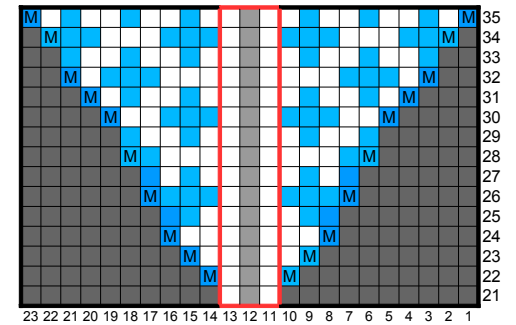
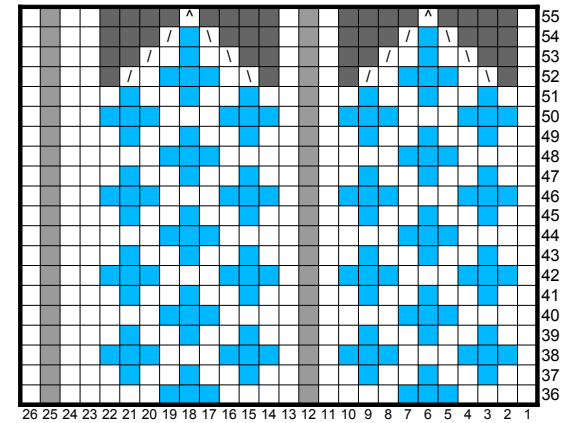
Key:

- / Knit 2 Together
- \ Slip Slip Knit
- ^ Slip 2 purl-wise, knit one, pass slipped stitches over
- M Make 1

Red outline indicates thumb placement



Left Mitten Chart



Key:

- / Knit 2 Together
- \ Slip Slip Knit
- ^ Slip 2 purl-wise, knit one, pass slipped stitches over
- M Make 1

Red outline indicates thumb placement